

# Roland TR-505 ROM Expansion

## Installation Instructions

### The kit includes the following:

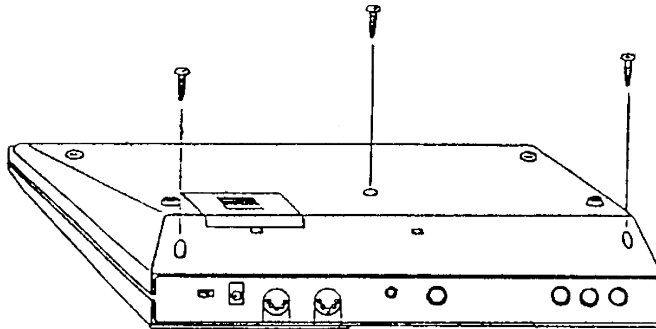
- 1x Pre-assembled ROM expansion board
- 1x 28-way turned pin IC socket
- 2x 2-position miniature toggle switches

### You will need:

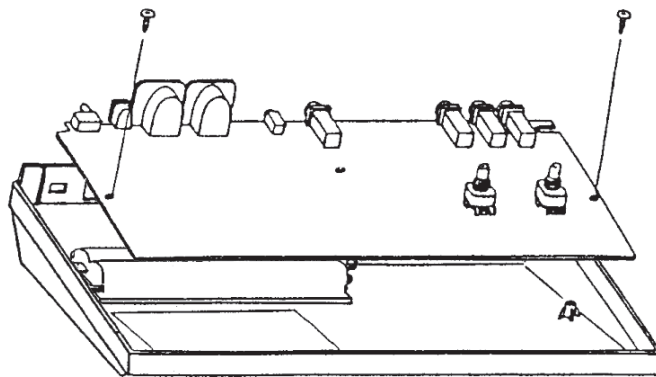
- Fine-tipped soldering iron & solder (tin / lead alloy recommended)
- Desoldering pump or solder wick
- Phillips head screwdriver
- Wire strippers
- Small-gauge stranded core wire

## Installation

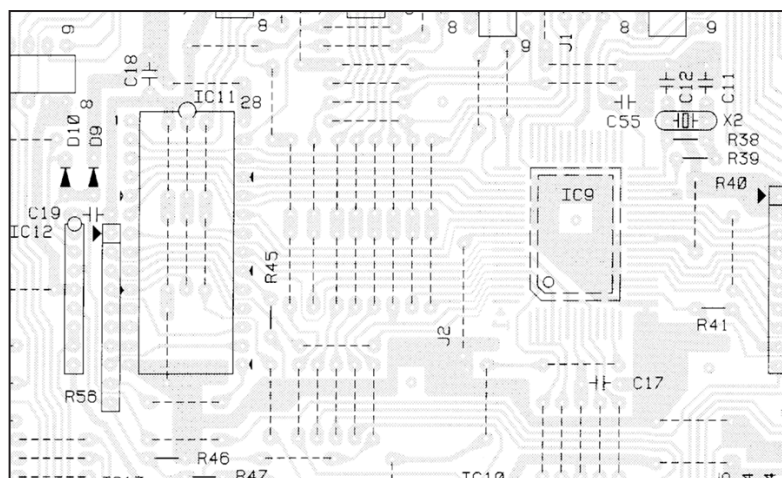
1. Remove any batteries if they are installed, and remove the 3x screws on the bottom of the TR-505, along with the VOLUME and TEMPO knobs on the top.



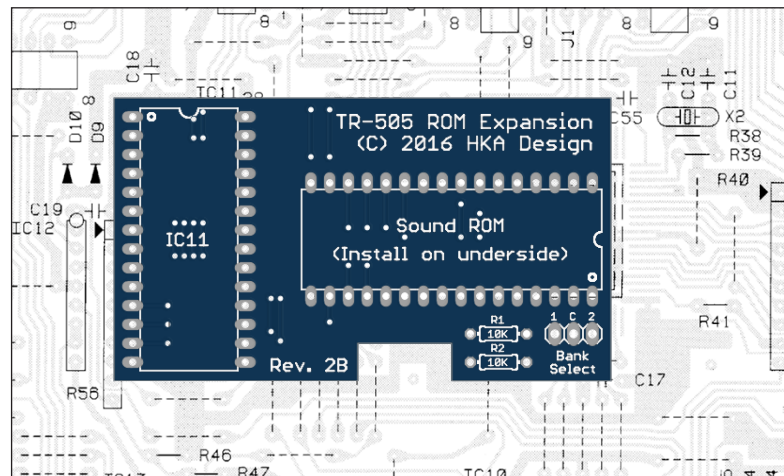
2. Separate the two halves of the case. Unplug the 3x Molex connectors joining the top case to the bottom, as well as the connector from the battery box. Remove the 2x screws which secure the main board to the bottom case and lift it out of the case.



3. Locate IC11 on the main board and desolder it, being careful to not lift any pads. In its place, solder the included IC socket.

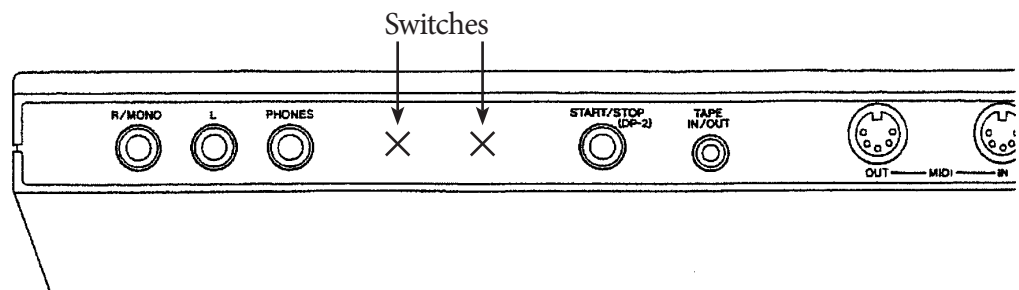
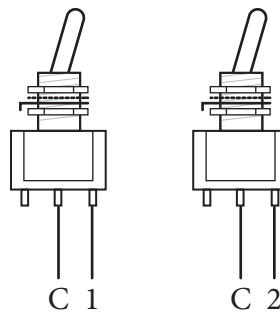


4. Plug the expansion board into the IC socket. It will only go in one way round, but make sure that all the pins are aligned correctly with the socket.



5. Reinstall the main board in the bottom case and replace the 2x screws, as well as the battery connector. Drill the holes for the toggle switches in the back panel, being careful to not hit any components with the drill bit. Connect them to the expansion board as shown:

2x 2-position toggle switches



6. Reconnect the cables from the top case and reassemble the TR-505. Make sure that no wires are being pinched. Replace the 3x case screws and VOLUME and TEMPO knobs.